



Standard Digital Batch Counters

ASK2D and ASK3D

TECHNICAL FEATURES

- ✎ TWO OR THREE DIGIT COUNTERS
- ✎ COUNT UP TO PRE-SET FIGURE
- ✎ SPCO 5 AMP RELAY OUTPUT
- ✎ PANEL OR SURFACE MOUNTING
- ✎ DIGITAL SETTING
- ✎ COUNT COMPLETE LED INDICATOR

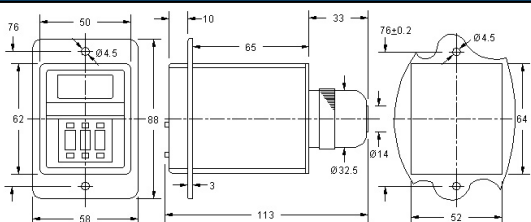
TECHNICAL SPECIFICATION

SUPPLY VOLTAGE(S)	120V & 230 AC. Unaffected by supply variations of +10% to -20%	
POWER CONSUMPTION	Approximately 2 watts or 3VA	
CONTROL OUTPUT	One SPCO relay with contacts rated 5 amp 230V AC resistive.	
CONTROL INPUT SYSTEM	0 to 99 (ASK2D)	Volt free external normally open contact
RESET INPUT	Volt free N.O. contact	
COUNTING SPEED	Contact Input 20 cps max. (Signal width: 25msecs min.)	
LIFE	Mechanical 5,000,000 operations Electrical 100,000 at rated load	
OPERATING TEMPRATURE	-10 °C to + 55 °C	
RESET SYSTEM	Power off to reset	
INTERFERENCE PROTECTION	Protected from short term supply borne voltage transients	

OPERATIONAL FEATURES

Set the desired count number by means of the digital BCD switches. On application of a continuous supply voltage the LED display shows zero and the count up commences, and is displayed on each closure of the switch, until the pre-set figure is reached. On completion of the count, the 'Count Complete' LED illuminates and the relay energises and remains energised until the unit is reset by removal of the supply voltage.

CASE DIMENSIONS



Dimensions in mm



ASK2D



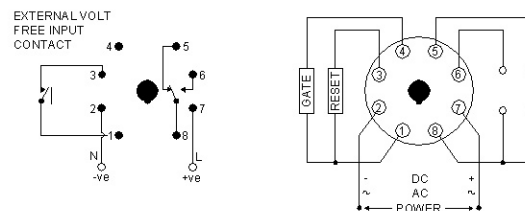
ASK3D

ORDERING DETAILS

ASK	2D	VOLTAGE
	3D	

SEE PAGES 7-8 FOR BASES AND ACCESSORIES

CONNECTION DETAILS



See product for appropriate Connection Details