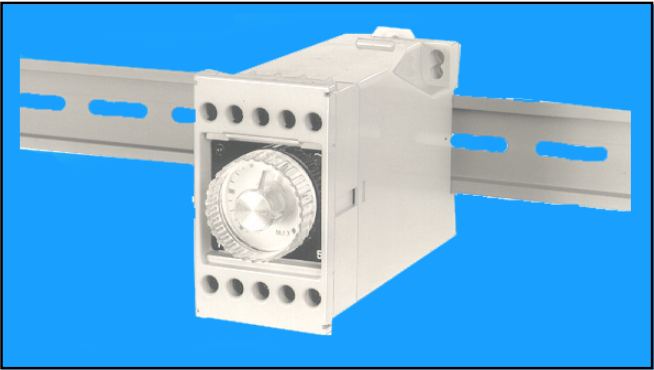




## DIN Rail Mounting Current Monitor CMP

### TECHNICAL FEATURES

- DIRECTLY MONITOR LOAD CURRENTS OF UP TO 5 AMPS**
- USE OUR CURRENT TRANSFORMERS FOR HIGHER LOADS**
- CLIPS DIRECTLY ON TO 35mm DIN RAIL**
- UNDER AND OVER CURRENT MONITORING**
- DPCO RELAY CONTACTS RATED AT 5 AMPS**
- LED INDICATORS FOR 'POWER' AND 'RELAY' STATUS**



### TECHNICAL SPECIFICATION

<b>SUPPLY VOLTAGE(S)</b>	24V, 120V and 230V AC, 50/60Hz. Unaffected by supply variations of + 10% to -20%
<b>POWER CONSUMPTION</b>	Approximately 2 watts or 3VA
<b>CONTROL</b>	One DPCO relay with contacts rated 5 amp
<b>OUTPUT</b>	230V AC resistive
<b>CURRENT RANGE</b>	0.2 to 5 amps. (Use our external current transformers for higher loads)
<b>INPUT RESISTANCE</b>	Less than 0.1 Ω
<b>HYSTERESIS</b>	Less than 1% of maximum current
<b>OPERATING TEMPERATURE</b>	-10 °C to +60°C
<b>SCALE MARKING</b>	Graduated from "Min" to "Max"
<b>INTERFERENCE PROTECTION</b>	Protected from short term supply borne voltage transients

### ORDERING DETAILS

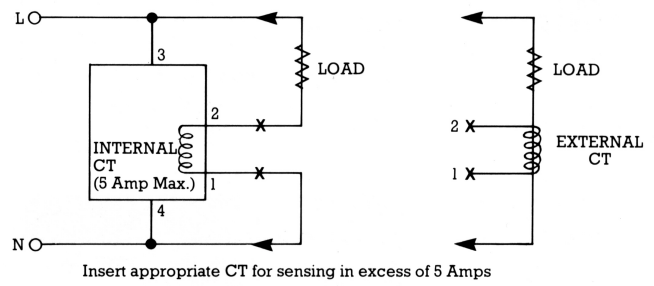
CMP	VOLTAGE
-----	---------

SEE PAGE 70 FOR CURRENT TRANSFORMERS

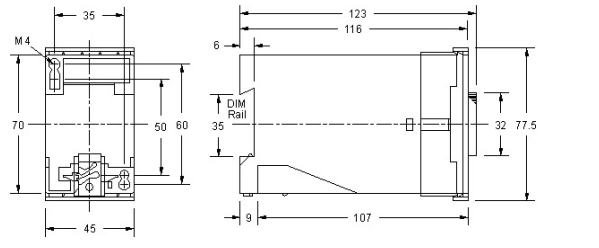
### OPERATIONAL FEATURES

On application of a continuous supply voltage, the 'Power' LED illuminates and the CMP commences monitoring the load current. If the load current should exceed the level set on the scale of the unit, the 'Relay' LED illuminates and the relay energises, until such time as the current again falls below the set level, returning the 'Relay' LED and relay to their previous state.

### OUTPUT WIRING



### CASE DIMENSIONS



Dimensions in mm

### CONNECTION DETAILS

