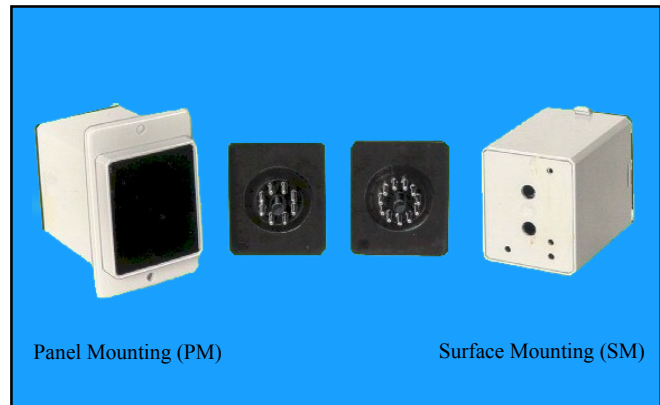




Plug In & Panel Mounting Modules PM8/PM11, PW8/PW11 & PW8/PW11-LED

TECHNICAL FEATURES

	PLUG IN MODULE CASE WITH EITHER 8 PIN OR 11 PIN HEADERS
	PANEL MOUNT MODULE CASE WITH EITHER 8 PIN OR 11 PIN HEADERS
	INTEGRAL MOUNTING LUGS ON PLUG IN TYPE
	PRE-DRILLED FOR LED'S POTENTIOMETERS ETC.
	SUPPLIED WITH 'BLANK' TOP LABEL
	ACCEPTS UP TO TWO PCB'S
	PW8-LED, PW11-LED FITTED WITH WIRED RED AND YELLOW LED'S



Panel Mounting (PM)

Surface Mounting (SM)

TECHNICAL SPECIFICATION

CASE MATERIAL	Light grey polycarbonate
HEADER MATERIAL	Black glass filled Nylon
HEADER	Approximately 4 ins colour coded PVC covered WIRE
OPERATING TEMPERATURE	110 °C maximum
VOLTAGE BREAKDOWN	2500V r.m.s. between pins
CURRENT RATING	5 amp maximum (mated)
LABEL	Supplied with black, blank PVC top label

ORDERING DETAILS

PM 8
PM11

PW8
PW11

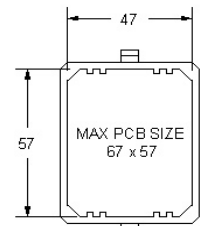
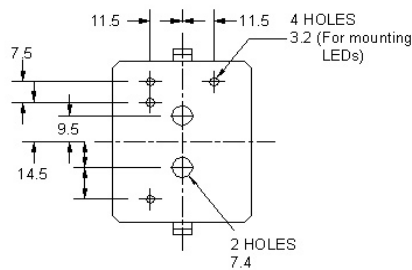
PW8-LED
PW11-LED

OPERATIONAL FEATURES

- Advantages of using the Modules include reduced assembly and production times due to the following features:
- All headers are pre-wired in 24 AWG stranded, PVC covered Wires stripped, tinned and colour coded to indicate pin connection. (Pins 1-9 as resistor colour code, and Black = 10, Pink = 11)
- Positive snap-on cover moulded to include formed holes to suit LED and potentiometer mounting.
- Two sets of board guides suitable for retaining one or two PCBs.
- Will fit all known 8/ 11 pin octal / sub-magnal surface or chassis mounting bases.
- Holding lugs moulded into the pw case for use with 8-pin retaining clip bases type 8PFA (long clip).
- An 11-pin case PW11 can be secured to the A11P DIN base using the timer retaining clip (11-pin clip).
- Panel mounting versions.

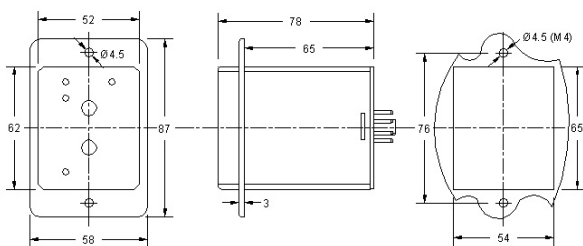
SEE PAGES 7-8 FOR BASES AND ACCESSORIES

INTERNAL & EXTERNAL FEATURES

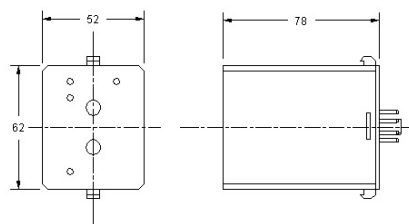


NOTE: Mounting lugs are only fitted to PW8 and PW11 types.

CASE DIMENSIONS



Panel Mounting (PM)



Surface Mounting (SM)

Dimensions in mm