



## Standard "Delay on" Timer

DO

### TECHNICAL FEATURES

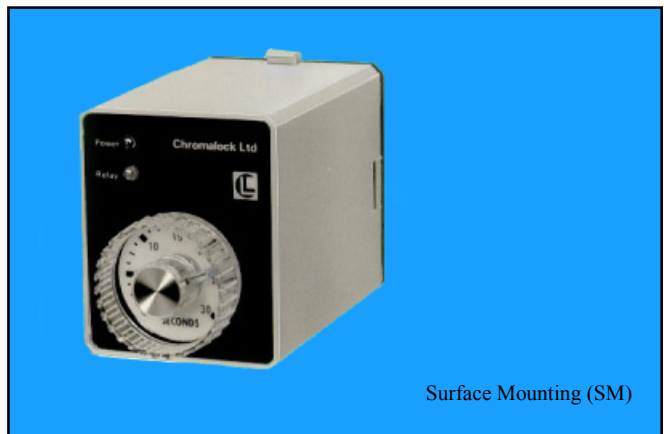
- PANEL OR SURFACE MOUNTING MODELS**
- WIDE CHOICE OF OUTPUT BASE CODES INCLUDING INSTANTANEOUS CONTACTS**
- MAIN TYPES HAVE ISOLATION TRANSFORMERS**
- STANDARD TIME RANGES UP TO 10 HOURS**
- OPTIONAL TIME RANGES UP TO 400 HOURS**
- REMOTE POTENTIOMETERS OPTION AT NO COST**

### TECHNICAL SPECIFICATION

<b>SUPPLY VOLTAGE</b>	12V, 24V, 48V, 120V AC or DC and 230V AC. 50/60Hz. Unaffected by supply variations of +10% to- 20%
<b>POWER CONSUMPTION</b>	Approximately 2 watts or 3VA
<b>CONTROL OUTPUT</b>	Relay changeover contacts rated 5 amp 230V AC resistive
<b>BASE CODE(S)</b>	01 to 07 inclusive, RP
<b>TIME RANGES</b>	1, 3, 6, 10, 30 and 60 seconds or minutes: 3, 6 or 10 hours
<b>MINIMUM TIME</b>	100m secs or 1 % of range as appropriate
<b>REPEAT ACCURACY</b>	Approximately 1 % range
<b>TEMPERATURE COEFFICIENT</b>	Better than 0.04 % per <sup>o</sup> C
<b>OPERATING TEMPERATURE</b>	-10 <sup>o</sup> C to + 60 <sup>o</sup> C
<b>RESET TIME</b>	20m secs or better
<b>INTERFERENCE PROTECTION</b>	DC types are reverse polarity protected. All types are protected from short term supply borne transients.
<b>OPTIONS</b>	FT, IC, NS, PT, RP



Panel Mounting (PM)



Surface Mounting (SM)

### ORDERING DETAILS

DO	PM SM	BASE CODE	TIME	VOLTAGE	OPTIONS
----	----------	--------------	------	---------	---------

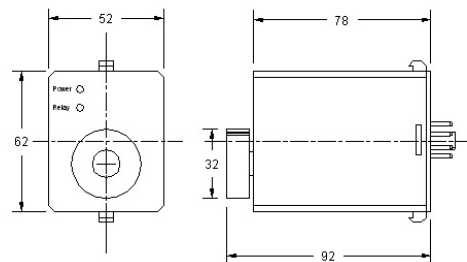
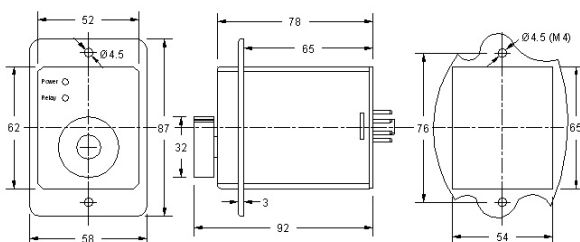
SEE PAGES 6 - 8 FOR BASE CODES, MANUFACTURED OPTIONS, BASES AND ACCESSORIES

SEE PAGE 9 FOR GLOSSARY OF TERMS

### OPERATIONAL FEATURES

On application of a continuous supply voltage, the timing circuit is initiated, the 'Power' LED illuminates and the instantaneous contacts, if fitted, will operate. At the end of the set time period the 'Relay' LED illuminates and the timed contacts operate and remain operated until the unit is reset by removal of the supply voltage.

### CASE DIMENSIONS



Dimensions in mm